

Please read the instructions carefully prior to installing.

GOPedal_{plus}

DIGITAL THROTTLE CONTROL MODULE



MADNESS GOPedal Plus Installation Manual

Contents

Table of content

Content of package.....	3
Installation.....	4
Remote Control.....	12
The MADNESS GOPedal Plus smartphone app.....	21
FAQ.....	26
Troubleshooting.....	27
Disclaimer.....	29
Waste electrical equipment and batteries.....	29
Contact.....	31
Legal notice.....	31

Symbol declaration

- ① Information
- ⚠ Warnings
- 💡 Tips and tricks

Content of package



MADNESS GOPedal Plus ECU

Throttle Control Tuning Module controls throttle response



Remote Control

Controls the Throttle Control Tuning Module



Wire Harness

Vehicle specific harness that is used to plug in the tuning module



Installation Materials

Variety of fasteners, glue pads and etc to mount the controller



Screwdriver

Opens the remote control to swap the CR2032 battery

Installation

The MADNESS GOPedal Plus is developed for easy installation.

Please perform the following steps one after the other as described.



If you need help with the installation please contact us at 512-982-9393

Pre-installation checklist

1. Park the vehicle and open the driver-side door as far out as possible.
2. Move the driver's seat back to allow as much space as possible in the footwell.
3. Switch off the ignition, remove the key from the vehicle and with the door opened, lock the vehicle (if possible).
4. Wait at least 10 minutes until all systems of the vehicle have been deactivated before starting the installation.



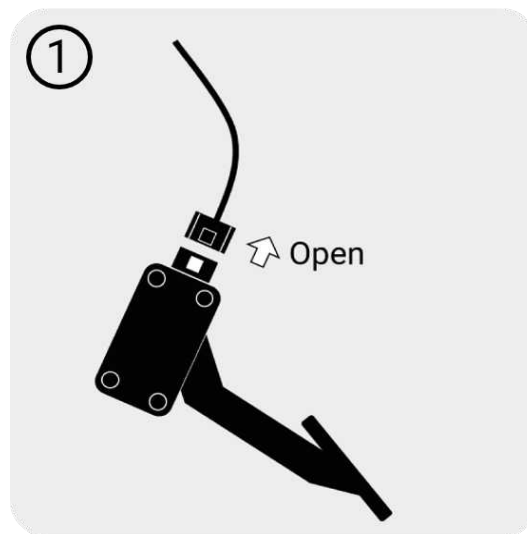
If your vehicle is equipped with keyless-entry the accelerator pedal is powered-up when the driver approaches the car with the keyfob.

Place the keyfob well out-of-range of the vehicle and wait for 10 minutes for the vehicle to power down.

(1) Disconnect the Throttle Pedal

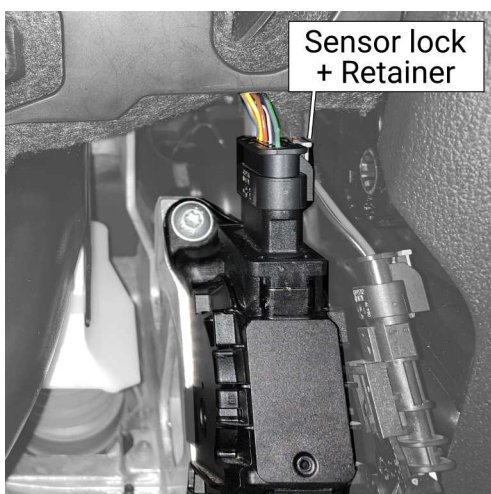
Locate the pedal sensor

Depending on the type of vehicle the throttle pedal can be floor-mounted or mounted hanging. In both cases the process is similar. In some vehicles that feature a floor-mounted pedal, it is possible that the pedal will need to be unbolted first if the plug is hard to get to) in order to plug in the module.



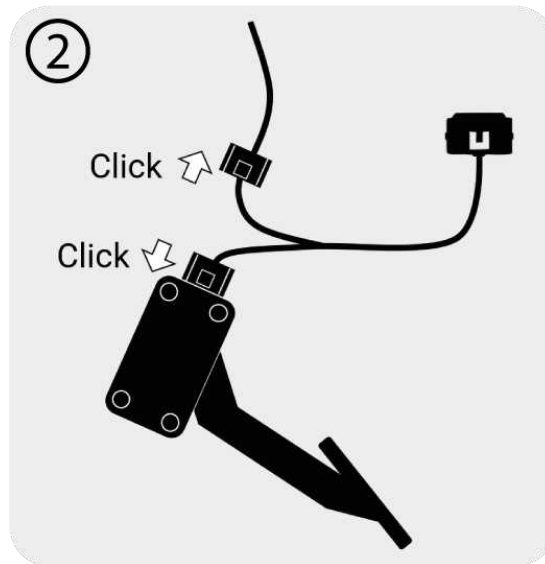
Disconnect the Pedal Sensor

All automotive connectors have some kind of locking plug. Locate this plug, pull back the retainer when available, push the locking mechanism to unlock and pull the connector off.



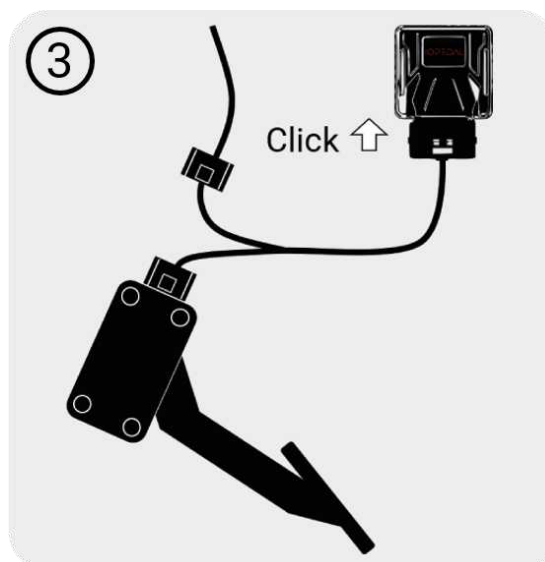
(2) Connect the Harness

The harness comes with the same connectors as the pedal sensor in your vehicle. Connect the harness in between the original connectors.



(3) Connect the MADNESS GOPedal Plus Module

The MADNESS GOPedal Plus can now be connected to the harness.



(4) Turn on the ignition

Confirm the handbrake is engaged and the car is in park or neutral. Turn on the ignition without starting the engine.

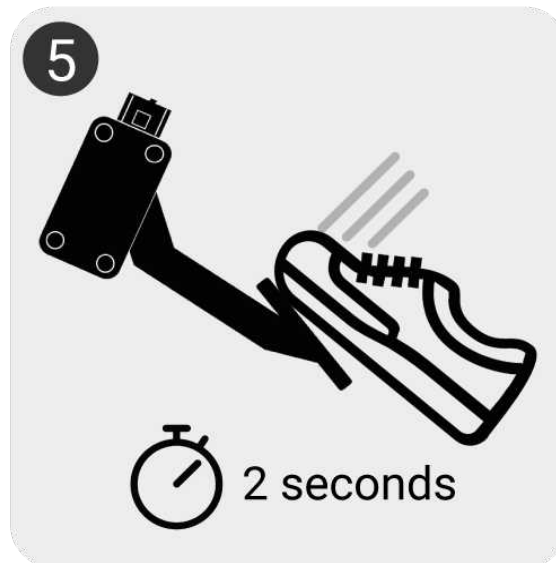


Activate the remote control and check the Connection status. The connection LED should now light up blue and the Sport Mode selected.



(5) Auto-Ranging-Mode (Learning mode)

The Auto-Ranging-Mode will start automatically with the first activation (ignition on) of the GOPedal. Fully depress the accelerator pedal and hold it for 2 seconds and repeat it for twice. Based on the Your GOPedal is now completely configured The installation is now complete and a test drive can be made.

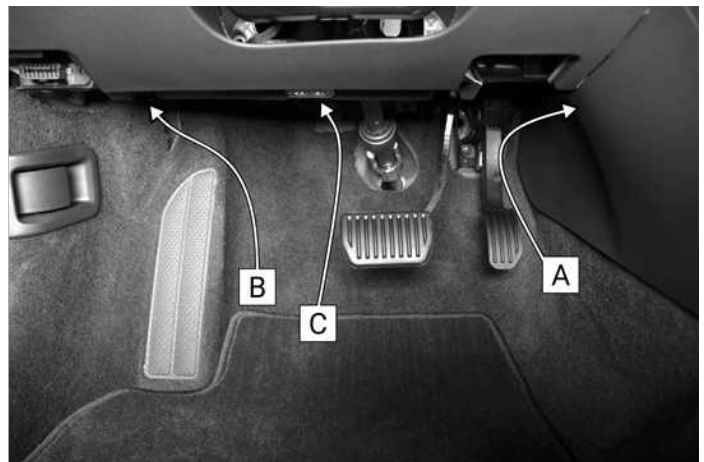
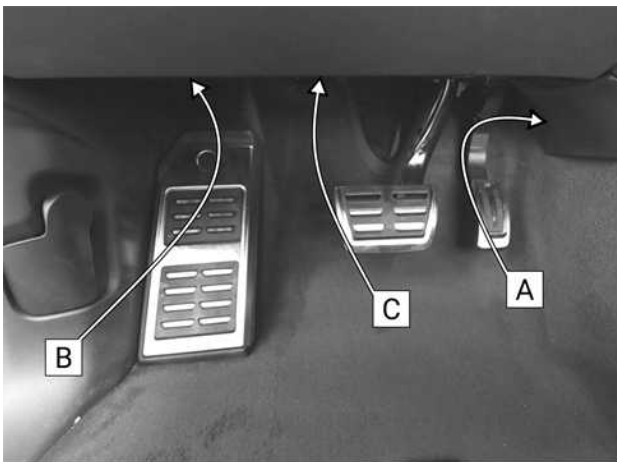


Mounting the GOPedal Plus



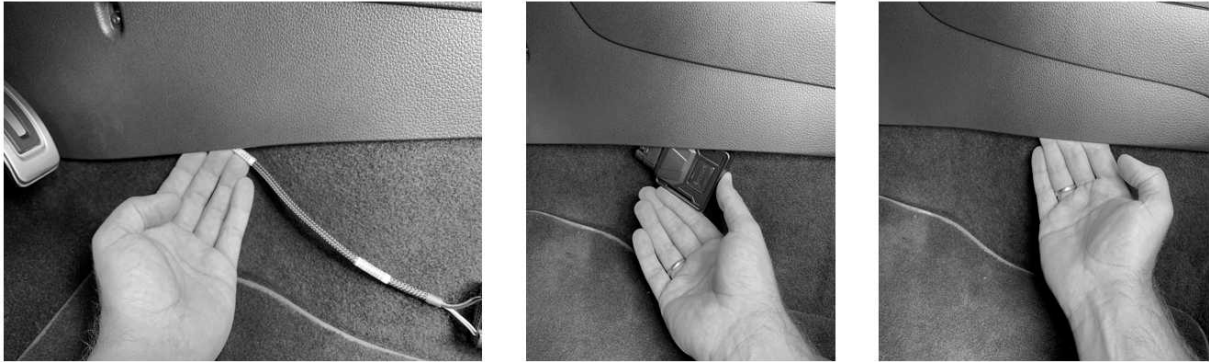
It is very important to note that you must mount the module and harness firmly and securely in place so it does not become loose. The cables or the module falling on the floor while driving can pose a safety risk.

Several places can be used to mount the MADNESS GOPedal Plus. Most common places are [A] inside the center console, [B] on the left side above the foot-rest and [C] above the pedals in the plastic cover.



Use the glue pads and/or the straps to firmly mount the module and the loom so it can not interfere with the driving of the vehicle.

[A] Positioning the MADNESS GOPedal Plus Control Unit in the area of the center console is the easiest thing to do on most vehicles.



[B, C] The control unit can also be attached to plastic surfaces using the adhesive pads.



Mounting the Remote Control

The control unit is supplied with a holder in which the remote control can be placed while driving. Use the supplied adhesive pads to attach the holder. Choose the position of the holder particularly carefully so that operation is easy while driving.

Apply the glue pad to the backside of the clip and place where you like.



Apply the clip with glue pad at a suitable location.

Test the stability of the wireless signal by starting the remote. If necessary, rearrange the module or the remote.



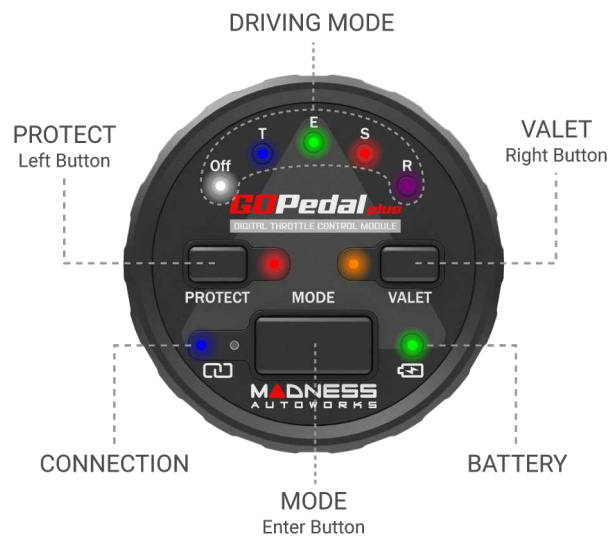
When the PROTECT or VALET mode is used, we recommend that you do not leave the remote in the vehicle. The remote can be easily taken out of the clip and carried in a pocket or a bag.

Remote Control

Once activated, the Throttle Control Module automatically establishes a radio connection with the MADNESS GOPedal Plus Remote Control and allows you, the driver to select programs and subprograms to enhance your driving style. In addition you can also use the remote control to activate and deactivate the PROTECT and VALET Modes.

Starting the remote

Pressing any button on the remote activates the module. The remote control starts communicating with the throttle module once the connection is established (ignition or engine must be on). While the connection is being established, the upper LEDs light up Blue and will change from left to right. Once the connection is created, the LEDs show the current setup of the MADNESS GOPedal Plus..



Driving modes

The factory setup of the MADNESS GOPedal Plus configures the driving modes as follows:

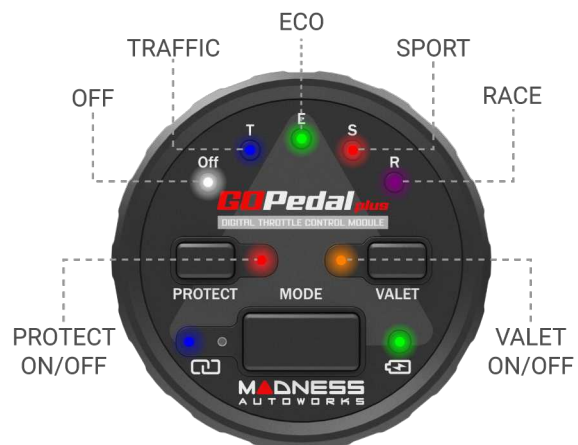
OFF mode (White) stock performance

TRAFFIC mode (Blue) optimized for city traffic and traffic jams

ECO mode (Green) increases fuel efficiency

SPORT mode (Red) great response and no throttle lag

RACE mode (Purple) when you need even more...



To switch between driving modes, press the left or right button until you reach the desired intensity. Please be sure to do this when the vehicle is stationary.

Never switch modes while the vehicle is in motion!



Sub-Program Adjustment (Fine Tuning)

Each driving mode consists of 5 sub-programs that are used for fine tuning. Over time we suggest you try out each mode to find one that you like best and remember you can fine tune each mode to individualize your driving style.

The sub-program selection can be activated by pressing the program Adjust Button (Mode) once. In the sub-program adjust-mode the LEDs are all lit in the same color as the program. The actual adjustment is highlighted and the 4 other LEDs are slightly dimmed.

Pressing the left and right button cycles through the sub-programs where left adjusts down and right adjusts up.



Valet mode

The Valet Mode reduces the maximum travel of the accelerator pedal. This will result in reduction of throttle response and a power reduction of the vehicle. This mode can be used when you have handed over your vehicle over to a valet or an inexperienced driver.

To activate the valet function press and hold the VALET mode button until the Blue LED lights up. In valet mode the all corresponding LEDs will start blinking Orange. The top 5 LEDs will display the fine adjustment of the valet function. The left button will detune throttle response and the right button will raise it.

To disable this function hold the VALET mode button until the Blue LED lights up. Release the button and the system will return to the previous program.

After a button inactivity of 1 second the MADNESS GOPedal Plus will be updated automatically.



The VALET functions stays active through power cycles



The PROTECT mode has priority over the VALET mode. So if both are active the secure-mode will disable the pedal on the next vehicle start.

PROTECT Mode

The PROTECT Mode completely disables the accelerator pedal on the next vehicle start. This makes it impossible to rev-up the engine without having the remote control.

To activate PROTECT Mode, press and hold the PROTECT Mode button until the Blue LED lights up. The secure LED will light up red to indicate this feature is on.

On the next MADNESS GOPedal Plus Power Cycle, the pedal will be disabled and the PROTECT Mode will now be enabled.. To turn off the PROTECT Mode and activate the pedal press any button on the remote and allow it to connect. The accelerator pedal will now function normally.

PLEASE NOTE! The PROTECT Mode function is still activated for the next power cycle. To deactivate the PROTECT Mode press and hold the PROTECT Mode button once more until the Blue LED lights up.

After a button inactivity of 1 second the MADNESS GOPedal Plus will be updated automatically.



The PROTECT Mode has priority over the valet-mode. So if both are active the PROTECT mode will disable the pedal on the next vehicle start.

User Menu

The User Menu contains additional settings to further personalize the module for your needs. To enter the menu press and hold the Left AND Right button until both LEDs light up Blue.

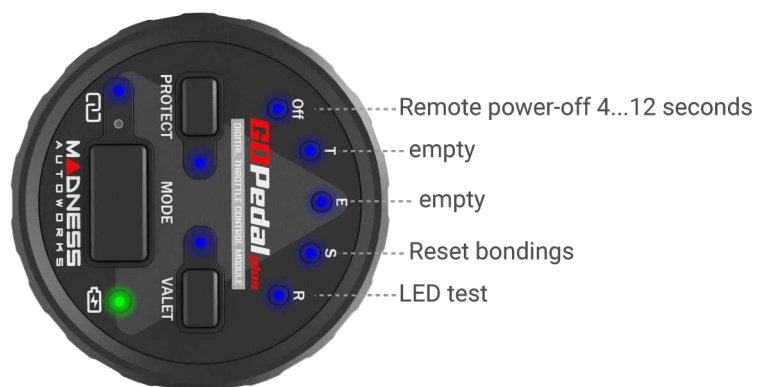
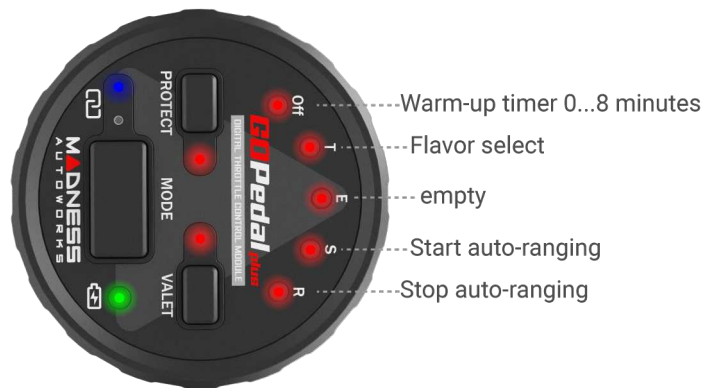


The user menu is active when both secure and valet LEDs are blinking red or blue.

There are 2 user menus available:

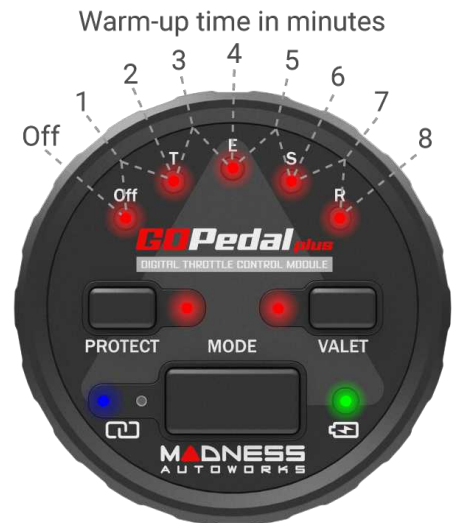
- red (GOPedal Plus settings) and
- blue (remote settings).

Pressing the right- or left button cycles the menus. When the end of the red menu is reached it will jump to the blue menu. The enter-button (Mode) is used to confirm the selection.



Warm-up timer

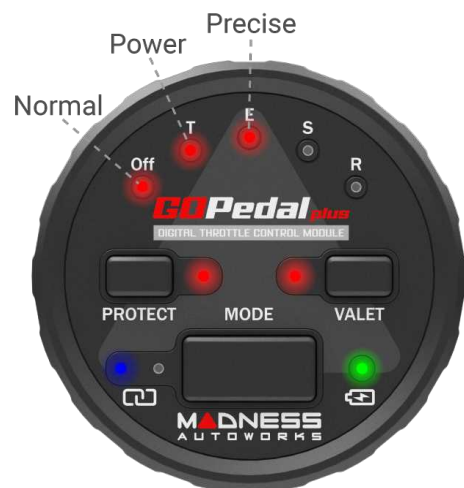
The warm-up timer gives the vehicle time to reach operating temperature before throttle tuning is activated. The default setting for this value is OFF. Select the desired warm-up time and press the Enter button (Mode) to confirm.



If no button is pressed within the power-off time of the remote, the remote will power down and no user function will be executed.

Flavor select

The GOPedal Plus contains 3 different flavors (**Normal** / **Power** / **Precise**) of the predefined Driving Modes. Switching the flavor changes all the programs and sub-programs to an other set of characteristics. Select the desired flavor and press the enter-button (Mode).



If no button is pressed within the power-off time of the remote, the remote will power down and no user function will be executed.

Start and stop auto-ranging

This function allows for a controlled start and stop of the auto-ranging function. This allows the GOPedal Plus to be transferred to a different vehicle and start the configuration process after installation. Please contact support for further assistance in this process.

Remote power-off time

The battery powered remote turns itself off after a certain period of inactivity. The default value for this 8 seconds but this value can be changed between 4 to 12 seconds.

Select the value and press the enter-button (Mode).

Remote power-off time in seconds



Reset bonding in the remote

This function allows the wireless stack of the remote to be reset and reconnect to any factory configured device. This function should only be used after contacting the support.

LED Test

This function cycles through all RGB LEDs on the remote and makes it possible to verify that all are still functioning. This function should only be used after contacting the support.

Connection status indicator

The connection status of the remote is constantly monitored and the result is shown on the connection status indicator.

Off: connecting

Blue: connection up and running

Blue/Red blinking: connection lost, trying to reconnect

Red: connection lost



Battery status indicator

The battery status of the remote is constantly monitored and the result is shown on the battery status indicator.

Green: battery good

Orange: buy a CR2032 battery

Red blinking: time to swap the battery

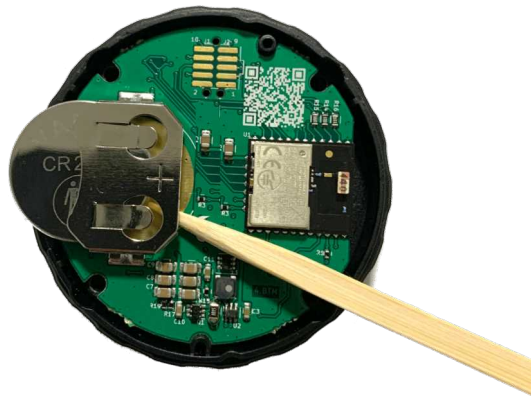


Swapping the battery of the remote

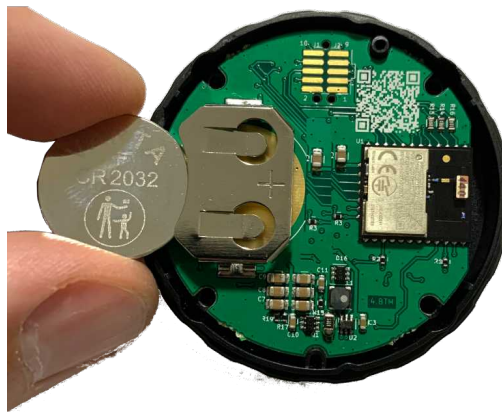
As soon as the battery status indicator start blinking red, the internal battery of the remote should be swapped. Use the included screwdriver **T8** to remove the 4 screw from the back of the remote.



Carefully remove the back cover from the remote. Make sure the printed circuit board doesn't fall out of the housing and remove the battery.



Place the new CR2032 battery.



Replace the back cover and put the screws back in their positions. Test the battery installation by pressing any button on the remote. The remote starts connection process. The vehicle needs to be in range before the connection can succeed.



The MADNESS GOPedal Plus smartphone app

The smartphone app can be downloaded free of charge from the Play Store for Android smartphones and from the App Store for iPhones. By clicking on the corresponding app logo below or by scanning the QR code, you will be automatically directed to the app.



Required Android version
Android 7.0 or higher



Required iOS version
iOS 15.2 or higher

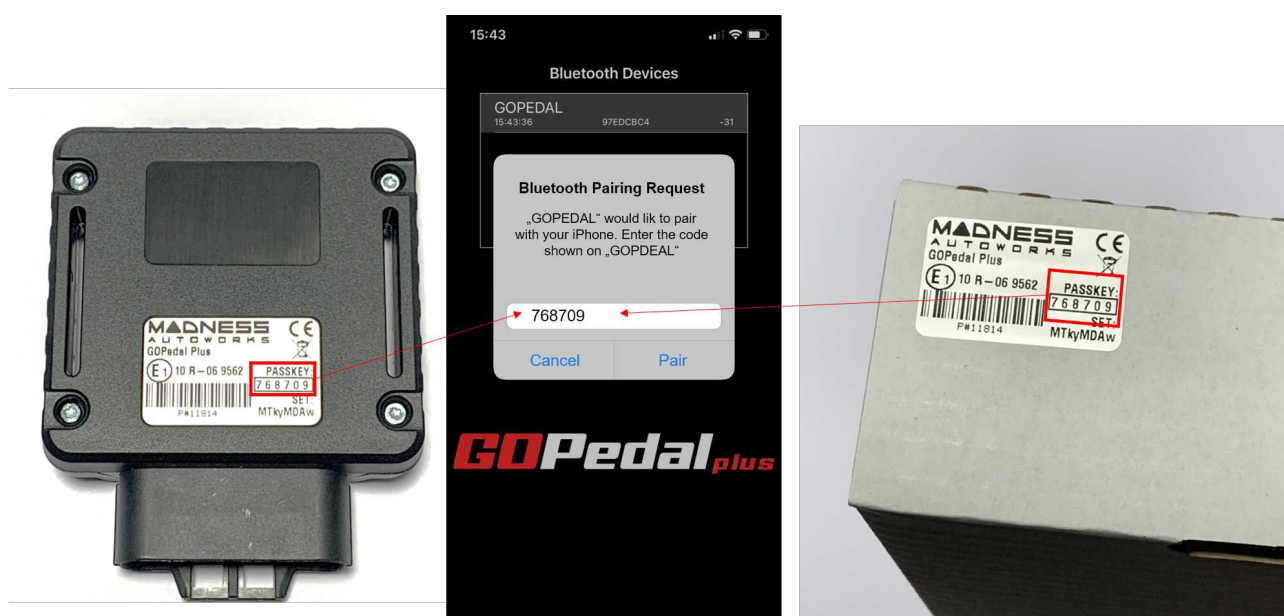


Legal note: Using a smartphone while driving on the roads or stationary with the engine running is prohibited in most countries. Please inform yourself about the local regulations in your country and follow them.

Make connection

After installing the GOPedal Plus, the connection can be established as follows.

1. Install the MADNESS AUTOWORKS app on your smartphone.
2. Turn on the Bluetooth functionality on your smartphone.
3. Switch on the ignition on your vehicle.
4. Start the app on your smartphone. After the GOPedal Plus is found, the pairing request is started.
5. Now enter the unique **6-digit PassKey**. You can find the PassKey in two different places.
 - a) On the type plate of the GOPedal Plus module (rear).
 - b) On the label of the GOPedal Plus packaging.



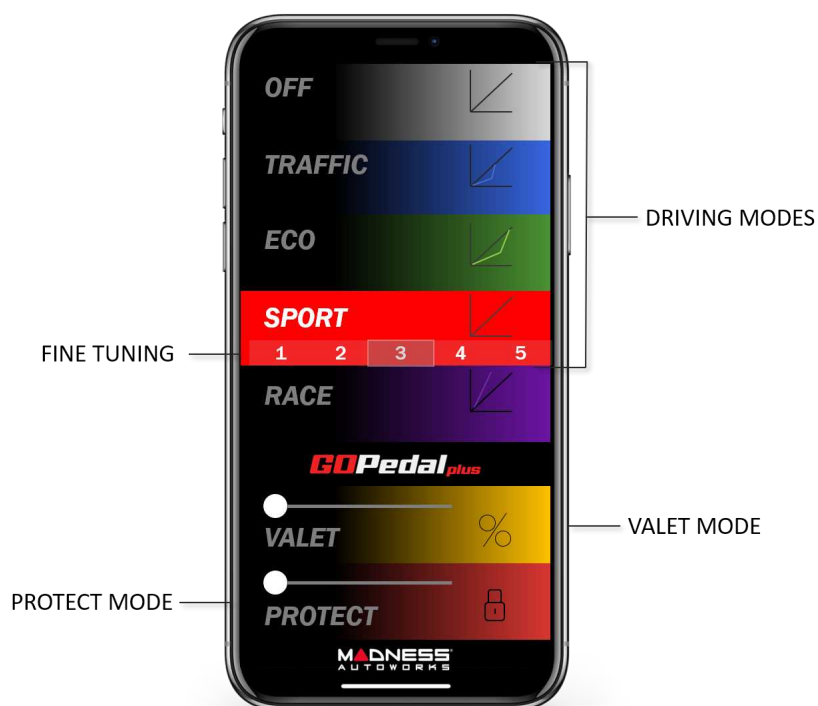
6. After a successful connection, the app switches to the main menu.
7. You can now use the app and make settings.



Legal note: Using a smartphone while driving on the roads or stationary with the engine running is prohibited in most countries. Please inform yourself about the local regulations in your country and follow them.

The functions of the MADNESS AUTOWORKS app

All settings and functions are clearly arranged in the main screen of the MADNESS AUTOWORKS app.



Legal note: Using a smartphone while driving on the roads or stationary with the engine running is prohibited in most countries. Please inform yourself about the local regulations in your country and follow them.

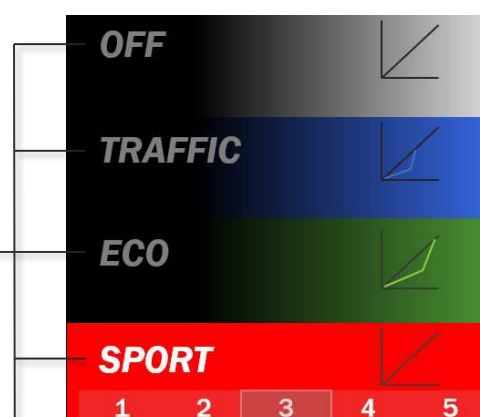
Selection of the different Driving Modes

The various driving programs can be selected as wanted directly on the smartphone with a click.

The activated driving program is highlighted in color.

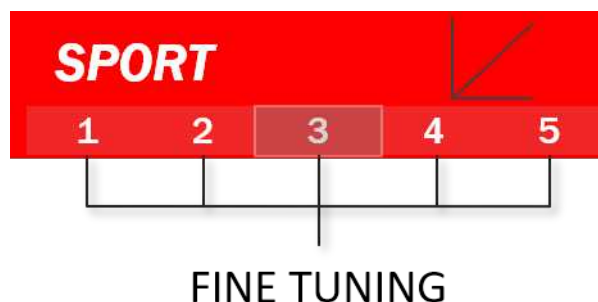
In the picture on the right, SPORT mode is activated.

DRIVING
MODES



Fine tuning of a driving program

When a driving program is activated, the selection menu for fine tuning is also displayed below. The fine tuning is divided into 5 levels in the smartphone app, just like it can be found in the remote control.

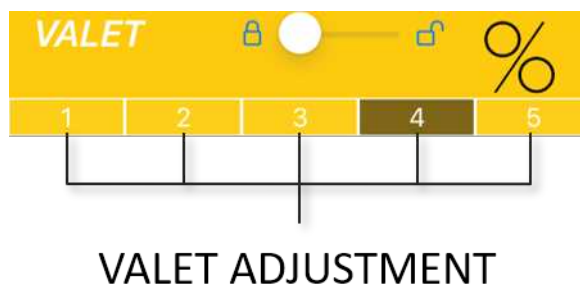


By selecting the individual levels, the selected driving program is directly adapted to the respective vehicle and serves to customize it.

Activation and setting of the VALET mode

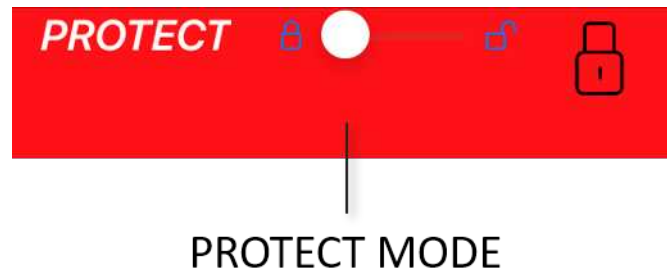
The VALET mode is one of the security features of the GOPedal Plus. Activation or deactivation is done by moving the lock side from left to right.

Similar to the remote control, the 5 individual stages for reducing the vehicle performance are also displayed below. These can be easily selected on the smartphone.



Activation of PROTECT mode

Activation or deactivation of PROTECT mode is also done using the lock slide. Similar to the remote control, the drivingModes can be used in parallel to the PROTECT mode. Please read about the PROTECT mode function in the "PROTECT mode" chapter.



Legal note: Using a smartphone while driving on the roads or stationary with the engine running is prohibited in most countries. Please inform yourself about the local regulations in your country and follow them.

FAQ

Q: How long after entering the vehicle should one wait before removing the OEM connector of the accelerator pedal?

A: This is vehicle dependent but as a rule of thumb it is prudent to wait for 10 minutes and until all in-vehicle displays or powered off.

Q: Is the GOPedal Plus active after installation?

A: Yes. After installation the auto-ranging function will start configuring the GOPedal Plus. This process runs autonomous and immediately applies the new found setting.

Q: Can the installation do damage to my vehicle?

A: When the correct procedure of the installation manual is followed, no harm can be done to the vehicle. Always use the correct tools for the job. This simplifies the installation and avoid any damage to the vehicle.

Q: Is it possible to disable the GOPedal Plus until my engine is warmed-up?

A: Yes. It is possible adjust the warm-up time of the engine according to your needs from disabled to 8 minutes. In the user menu of the remote you can select this value. The vehicle must be running to adjust this setting. The standard value is disabled.



Q: The remote stays on too long/short. How can I change this?

A: In the user menu of the remote power-off time in seconds can be adjusted between 4 to 12 seconds. The standard value is 8 seconds.

Q: The overall settings of all programs are still too strong/weak. Are there any other options to adjust my experience?

A: The GOPedal Plus comes with 3 flavors of programs. Normal / Power / Precise. The normal-flavor are the default settings. The power-flavor throws even more power in the experience. The precise-flavor gives more control to the accelerator pedal. In the remote's user menu can be switched between these flavors.

Troubleshooting

Problem	Solution
<p>Check engine light is on after first starting the engine.</p> 	<ul style="list-style-type: none"> • Turn off the ignition, check all connections and retry. • If the check engine is caused by an installation error which has been resolved (the accelerator pedal works as expected) it is possible that the check engine light remains active for several vehicle starts. After 5 vehicle starts this warning light should disappear. • If the accelerator pedal still doesn't work as expected, contact customer support for assistance.
<p>Connector doesn't fit or needs a lot of force to fit.</p>	<ul style="list-style-type: none"> • Compare the OEM connector with the connector on the wiring loom and see if they match. • If the connectors don't match, the wiring loom isn't suitable for your car. Contact customer support for further assistance.
<p>Connector does fit but check engine light is on and there is a poor to no throttle response.</p> 	<ul style="list-style-type: none"> • Possibly a wrong wiring loom was ordered with the same connector plugs but different pinning. • Contact the customer support for further assistance.
<p>The response of the vehicle is too strong. The acceleration is too high or the engine goes in too high RPMs.</p>	<ul style="list-style-type: none"> • Select a less powerful sub-program by pressing the modeButton and moving the selector to the left. If this reduction isn't enough, select a lower type of program.
<p>The response of the vehicle is too weak.</p>	<ul style="list-style-type: none"> • Select a more powerful sub-program by pressing the modeButton and moving the selector to the right. If this increase isn't enough, select a stronger type of program.
<p>The remote can't connect to</p>	<ul style="list-style-type: none"> • The wireless signal is getting interference or is

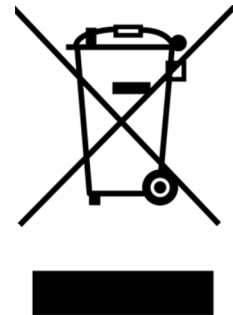
the GOPedal Plus or looses it's connection too often.	<p>being obstructed.</p> <ul style="list-style-type: none">• Try changing the position and/or orientation of the module.
The engine's RPM goes up slowly or is too high at idle.	<ul style="list-style-type: none">• Reset the auto-ranging by accessing the user menu in the remote. Start the engine and select the "Start auto-ranging" function.• Press the accelerator completely down for 2 seconds and release.• Select the "Stop auto-ranging" from the remote's user menu.
Other issues and problems	<ul style="list-style-type: none">• Contact the customer support for assistance.

Disclaimer

This product has been developed to the best of our knowledge and manufactured on state-of-the-art equipment. Nevertheless, do not be careless and use the enclosed notes and legal regulations to inform yourself. The manufacturer cannot monitor compliance with these operating procedures or conditions and methods during installation, operation, use and maintenance of the product. Therefore, we do not assume any costs resulting from or in any way connected with incorrect or negligent use or operation.

Waste electrical equipment and batteries

1. it should be noted that all owners of waste electrical and electronic equipment are required by law to collect this equipment separately from unclassified municipal waste. Accordingly, it is forbidden to throw old electrical and electronic equipment into the residual waste garbage cans or yellow garbage cans. The obliterated dustbin symbol shown below and affixed to electrical and electronic equipment also indicates the obligation to collect separately.



2. point out to all owners of waste electrical and electronic equipment that it is a legal requirement to remove them before handing over these waste equipment, waste batteries, waste accumulators, unless they are surrounded by these waste equipment.

3. point out that all end users of WEEE are responsible for deleting the personal data of the WEEE they dispose of.

4. owners of WEEE have defined and available options for return or collection of WEEE by public waste management authorities to ensure proper disposal of WEEE. It is also possible to hand in electrical and electronic equipment for reuse. For more information, please contact the relevant collection point or collection service.

The following link provides the option of viewing an online directory of collection and take-back points:

<https://www.ear-system.de/ear-verzeichnis/sammel-und-ruecknahmestellen>

5. note on the WEEE registration number: (WEEEReg.Nr. DE) registered: DE 71202783

Battery:

Since batteries and rechargeable batteries may be included, we are required by the Battery Act (BattG) to point out the following: Batteries and rechargeable batteries may not be disposed of with household waste, but the return of used batteries and rechargeable batteries is required by law. .. Used batteries may contain harmful substances and may be harmful to the environment and human health if stored or disposed of improperly. The battery also contains important raw materials such as: B. can be recycled with iron, zinc, manganese or nickel. You can return the battery free of charge after use or drop it off at a nearby location (store, municipal collection point, shipping store, etc.). Retail sales are limited to regular consumer quantities and spent batteries that the distributor has or had in stock as new batteries.



A sign with a wheeled garbage can and a cross means that the battery and accumulator must not be disposed of in household waste. Below this symbol there are also the following symbols, which have the following meaning:

Pb: Battery contains lead

Cd: Battery contains cadmium

Hg: Battery contains mercury

The following batteries are present in our electrical appliances:

Battery type: CR2032

Height: 3.2 mm

Width: 20 mm

Voltage: 3 Volt

Capacity: 0,23 Ah

Chemical composition: Lithium

Contact

The MADNESS AUTOWORKS support team is available to assist you during the office hours.

- Call us at +1 (512) 982-9393
- Email support via info@madnessautoworks.com

For a fast and efficient support experience please add following information on first contact:

- Name, email, telephone number
- Sales invoice (PDF/picture)
- Vehicle make, type, engine and year
- GOPedal Plus, remote and wiring loom bar codes
- Accelerator pedal pictures and installation pictures
- Problem description

Legal notice

MADNESS AUTOWORKS

22108 State Hwy 71

SpicewoodTexas 78669, USA