

Giulia GTA/GTAm Style Front Bumper + Fenders Assembly

We recommend painting or wrapping Front Bumper before proceeding with further steps, otherwise you'll need to mask Essential Kit parts afterwards.

Start by installing Front Flaps that come with Essential Kit, use Structural Glue from 3M or Wurth usually known as Black Bodywork Silicone Glue.



After positioning Flaps, continue with Sensors as shown below, use structural glue to attach heads.



Curve mesh edges to match shape of Bumper frame, apply glue in small seamless portions.





Application of glue in small dot portions evenly all around.



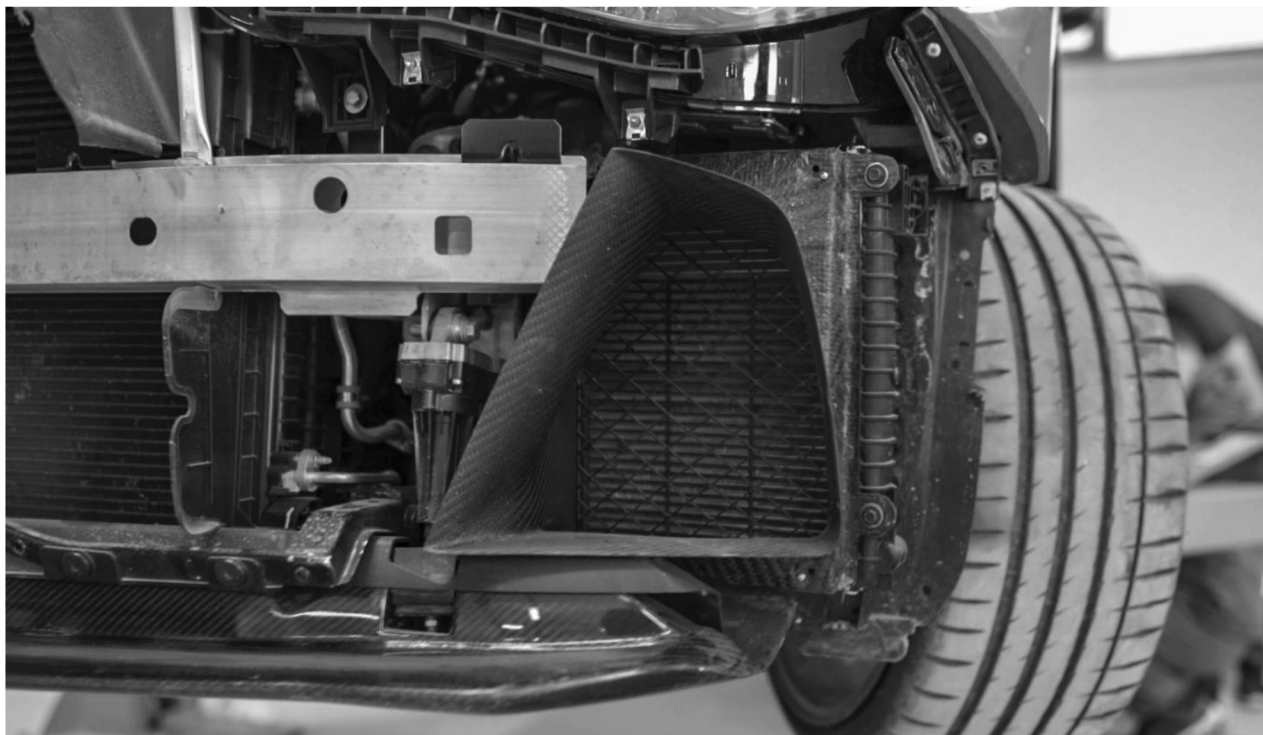
Position Front Bumper on car with Sensor Frame included on the kit make marks for the cut and cut it with Dremel or diamond disk tooling.



After cutting there is another Sensor Frame which fits behind aesthetic sensor frame which should be glued over the mesh.



Replace Splay Intercooler Air Intake, use mesh from OEM Intercooler Frame



Install Aero Front Splitter Extended Overlay using glue.



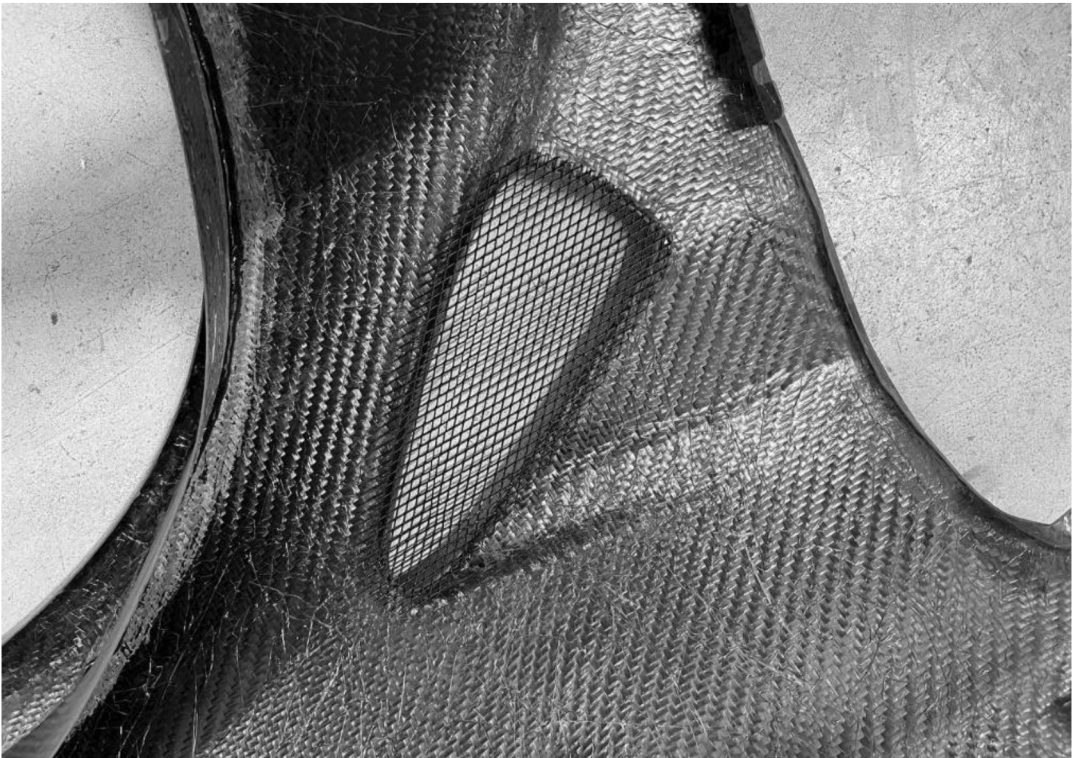
V-Grille is replacement besides the Badge, which has a cover that should be installed with glue.



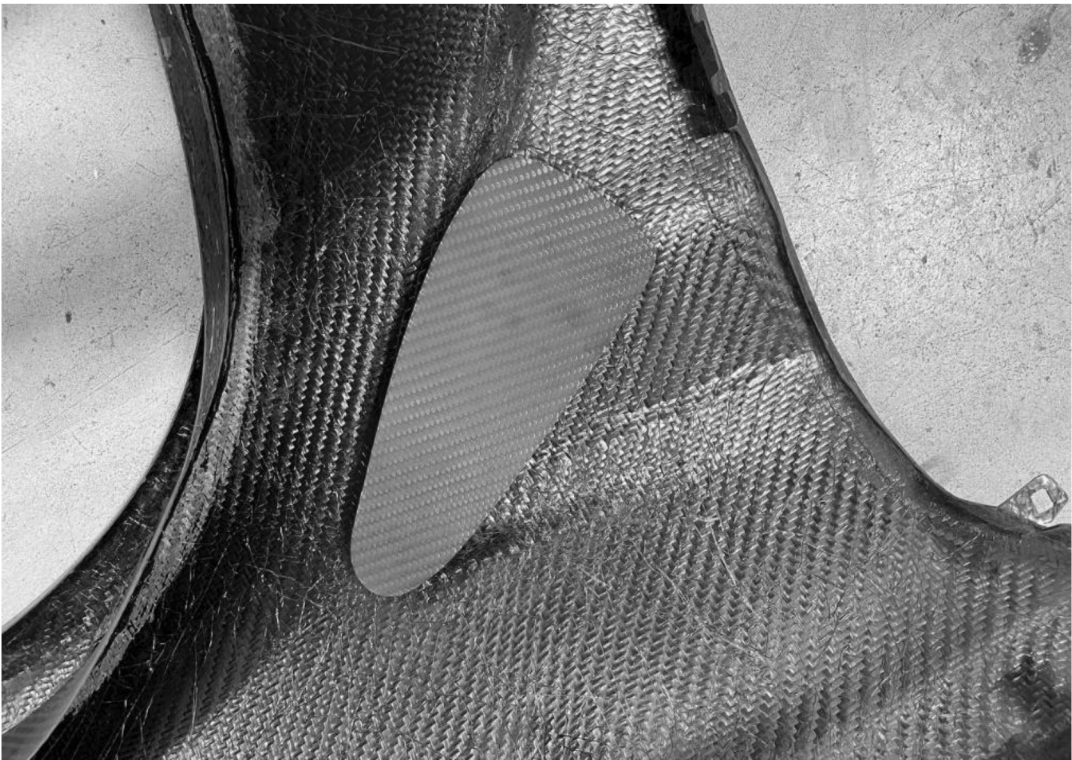
After cut is made on the mesh, install two caps using glue in small portions of dots like shown on the image below



Install Mesh on Front Side Fenders



Second install the Carbon Fiber frame on top of the Side Fender mesh like shown below



To install Front Fender use same hooks from OEM fenders.



Position the Front Bumper and tighten every screw including those of Aero Front Splitter, use glue to attach the second (aesthetic) Front Parking Sensor Frame.

